



**METAL ROOFING**  
SYSTEMS



SEE REVERSE SIDE FOR MATERIAL AVAILABILITY



## ENVIRONMENTALLY SMART COLORS - DESIGNED ENERGY EFFICIENT



SIERRA TAN



MEDIUM BRONZE



MANSARD BROWN



DARK BRONZE



MATTE BLACK



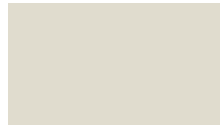
TERRA COTTA



SURREY BEIGE



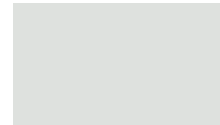
SANDSTONE



BONE WHITE



STONE WHITE



REGAL WHITE



COLONIAL RED



ASH GRAY



DOVE GRAY



SLATE GRAY



CHARCOAL GRAY



SLATE BLUE



BURGUNDY



PATINA GREEN

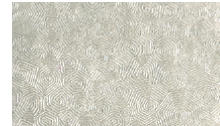


HEMLOCK GREEN



EVERGREEN

NON-PAINTED

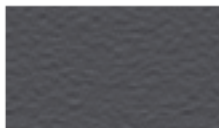


ACRYLIC-COATED GALVALUME\*

## TEXTURED COLORS - PREMIUM UPCHARGE



TLG BLACK



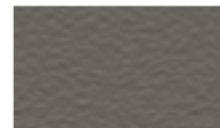
TLG CHARCOAL GRAY



TLG DARK BRONZE



TLG MEDIUM BRONZE



TLG MOONSTONE™

## METALLIC / PREMIUM COLORS - PREMIUM UPCHARGE



SILVER



COPPER



CHAMPAGNE



PRE-WEATHERED GALVALUME\*



HARTFORD GREEN



REGAL RED



REGAL BLUE

\* CONTACT YOUR REPRESENTATIVE FOR EXACT COLOR CHIP SAMPLE



## LOCATIONS

Stanley, NC

Fayetteville, NC

Conway, SC

Gallatin, TN

Pinellas Park, FL

Jackson, MS

[www.metalroofingsystems.com](http://www.metalroofingsystems.com)

**Faster. Smarter. Better. Period.**



Colors shown are matched as accurately as possible, but may vary slightly from finished product. These rich and vibrant colors are produced with either Kynar® 500 or Hylar® 5000 resins, which provide superior color retention, and allow us to offer non-prorated coating warranties for most applications. Coating warranty varies for Regal Red, Matte Black, Copper, Silver, Champagne, and Pre-Weathered Galvalume. Metallics are warranted for chip, crack, and peel only. Please contact your representative for more information.

STOCK AVAILABILITY MATRIX	LEED V4.1	ISR	EMI	3 YR. SRI	SRI	GALVALUME		ALUMINUM			
						24 GA.	22 GA.	.032	.040	.050	.063
Acrylic Coated Galvalume®	L	0.67	0.14	N/A	56	●	●				
Ash Gray		0.32	0.83	31	31	●		●	●		
Bone White	L	0.65	0.83	77	77	●		●	●		●
Burgundy		0.31	0.86	29	32	●					
Champagne		0.32	0.83	31	31	●					
Charcoal Gray		0.25	0.83	22	22	●	●	●	●		
Colonial Red		0.25	0.83	22	22	●		●			
Copper	L	0.35	0.75	32	32	●		●			
Dark Bronze		0.25	0.83	22	22	●	●	●	●		●
Dove Gray	L	0.35	0.83	35	35	●	●	●	●		
Evergreen		0.25	0.83	22	22	●		●	●		
Hartford Green		0.25	0.83	22	22	●		●	●		
Hemlock Green		0.25	0.83	22	22	●					
Mansard Brown		0.25	0.83	22	22	●	●	●	●		
Matte Black		0.25	0.83	22	22	●	●	●	●		●
Medium Bronze		0.25	0.83	22	22	●	●	●	●		●
Patina Green		0.32	0.83	31	31	●					
Pre-weathered Galvalume®		0.24	0.83	19	21	●		●			
Regal Blue		0.25	0.83	22	22	●					
Regal Red	L	0.35	0.83	35	35	●					
Regal White	L	0.65	0.83	77	77	●	●	●	●		●
Sandstone	L	0.35	0.83	35	35	●		●	●		
Sierra Tan		0.31	0.87	28	31	●		●	●		
Silver	L	0.54	0.77	55	60	●		●	●		
Slate Blue		0.25	0.83	22	22	●		●			
Slate Gray	L	0.35	0.83	35	35	●	●	●	●		
Stone White	L	0.55	0.83	59	63	●		●	●		
Surrey Beige	L	0.35	0.75	32	32	●		●			
Terra Cotta	L	0.35	0.83	35	35	●		●	●		
TLG Black		0.25	0.83	22	22	●					
TLG Charcoal Gray		0.25	0.83	22	22	●					
TLG Dark Bronze		0.25	0.83	22	22	●					
TLG Medium Bronze		0.25	0.83	22	22	●					
TLG Moonstone™		0.32	0.83	31	31	●					

**\* IF DESIRED COLOR IS NOT LISTED ON MATRIX PLEASE CONTACT METAL ROOFING SYSTEMS FOR AVAILABILITY**

NOTES	KEY
<ul style="list-style-type: none"> <li>All metal is painted with a .20 mil primer and .70-.90 mil Top Coat and 70% Kynar® 500 or Hylar® 5000. The reverse side has a .20 primer and .30-.40 backer coating.</li> <li>22-gauge steel available upon request.</li> <li>For low slope roofing to meet LEED V4.1 requirements, the initial SRI must be ≥ 82 OR the 3-year SRI must be ≥ 64.</li> <li>For steep slope roofing to meet LEED V4.1 requirements, the initial SRI for 75% of the roof must be ≥ 39 OR the 3-year SRI must be ≥ 32.</li> <li>Low slope roofing is defined as ≤ 2:12.</li> <li>Steep slope roofing is defined as &gt; 2:12.</li> </ul>	<ul style="list-style-type: none"> <li>● Stocked Item</li> <li>L LEED V4.1 Compliant</li> <li>ISR Initial Solar Reflectance</li> <li>EMI Emissivity</li> <li>SRI Solar Reflectance Index</li> </ul>

Oil canning is an aesthetic issue and is an inherent part of light gauge cold formed metal products. By using coil that has been processed properly, designing for thermal movement, following stringent specifications for installation, and proper handling, most oil canning can be eliminated. Oil canning is not grounds for coil/panel rejection.

Galvalume® is a registered trademark of BIEC. Hylar® 5000 is a registered trademark of Solvay Solexis, Inc. Kynar® 500 is a registered trademark of Atofina, Inc.



**METAL ROOFING**  
SYSTEMS



[www.metalroofingsystems.com](http://www.metalroofingsystems.com)